

JAPANESE TASTING HOUSE

お茶也

*"Covered in butterflies, the  
dead tree blossoms anew"*

KOBAYASHI ISSA



[WWW.THERAPIE.LUXE](http://WWW.THERAPIE.LUXE)

# “ SHŌMAN 小満 ” LUNCH MENU

12:00-14:30 (WEEK-END 15:30)

“5” GO MENU <27> - “7” NANA MENU <39>



EGGPLANT, BLACK AND WHITE SESAME  
ナスの味噌ごま和え



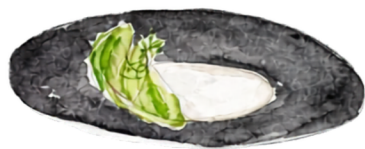
DAIKON, MISO, BELL PEPPER  
大根、パプリカ、味噌包



SOBA NOODLES, STRAWBERRIES, PEAS  
冷しそば



FENNEL SOUP WITH BLACK GARLIC CREAM  
フェネルスープ、黒にんにくの香



CABBAGE, CASHEW NUTS, JUICE  
焼きキャベツ



TOFU STYLE « DENGAKU »  
豆腐田楽



CUCUMBER AND SHISO MAKI  
CELERY SAUCE  
野菜巻き、セロリのミルク

## CELLAR (SHOP)

KIMINO SPARKLING JUICE (25 cl) - Pack : 6 Btl  
Momo (Peach) - Yuzu - Ume (Plum) **30**

BEER ECHIGO PREMIUM (KOSHIHIKARI RICE)- 50CL **8**  
CIDER LUMIERE - 33CL **13**

**DOMAINE KUHEIJI**  
CRÉMANT DE BOURGOGNE BLANC DE NOIRS **27**  
KUHEIJI ALIGOTÉ 2022 **28**  
BOURGOGNE CHARDONNAY 2022 **44**  
COTEAUX BOURGUIGNONS 2022, **26**  
BOURGOGNE PINOT NOIR 2022, **47**  
GEVREY-CHAMBERTIN 2022, **87**  
NUITS-SAINT-GEORGES 2022, **70**  
KUHEIJI ALOXE-CORTON 2022, **64**  
KUHEIJI POMMARD 1ER CRU "LES ARVELETS" 2022 **83**

KUHEIJI 50 JUNMAI DAIGINJO « EAU DE DÉSIR » 16% -72CL **46**  
KUHEIJI 50 JUNMAI DAIGINJO « SAUVAGE » 16% -72CL **46**  
KUHEIJI 35 JUNMAI DAIGINJO « EXTRAORDINAIRE » - 16% -72CL. **68**  
KUHEIJI 35 JUNMAI DAIGINJO « KYODEN » - 16% -72CL. **68**  
KUHEIJI 30 KAMOSHIBITO DAIGINJO "HI NO KISHI" 2020 - 16% -72CL. **190**

ENOKI KIYOMORI HEIAN- NIGORI 50 CL **48**  
YUZUSHU **56**  
UMESHU **56**

WHISKY JUNENMYO RED LABEL 46% - 70CL **70**  
WHISKY JUNENMYO ROUGE BLENDED 46%- 70CL **77**  
WHISKY JUNENMYO HALF DECADE 40%- 70CL **79**  
WHISKY JUNENMYO SEVEN 7 YEARS, 46%- 70CL **90**

RYORISHU ARTISANAL COOKING SAKE 15% - 30 CL **16**  
RYORISHU ARTISANAL COOKING SAKE 15% - 72 CL **28**  
HONMIRIN 14% - 30 CL **17**

“MISSION” OLIVE OIL 90GR **40**  
“MISSION” OLIVE OIL 180GR **72**  
Nazuna no Shio SALT - Arashio Ao **18**

## 節気 SEIKKI MENU < 80 >

12:00-14:00 (WEEK-END 15:00) & 19:00-21:30

SEVEN EXPRESSIONS — FROM THE VEGETAL TO THE EXCEPTIONAL. THE GO  
MENU ENRICHED WITH TWO CREATIONS FROM THE SEA (HAMACHI)  
AND THE LAND. (WAGYU A5)

## SHABU-SHABU

LUNCH & DINNER (L.O 21:30)

AROUND THE WHISPERING BROTH, EACH GUEST COMPOSES, DIPS, SAVOURS — SHABU-SHABU IS AN INVITATION TO SHARE A MEAL DIFFERENTLY, IN THE GENTLENESS OF TIME AND THE PRECISION THAT ONLY JAPANESE CUISINE CAN OFFER.  
3 GOURMET INTERPRETATIONS:



### WAGYU

EXCEPTIONAL JAPANESE BEEF (FILLET), GRADED A5, RENOWNED FOR ITS REFINED MARBLING AND UNPARALLELED TENDERNESS. A UNIQUE INTENSITY OF UMAMI AND MELT-IN-YOUR-MOUTH TEXTURE, UNLIKE ANY OTHER IN THE WORLD. SERVED WITH THE INGREDIENTS LISTED IN THE VEGETARIAN MENU. TO FINISH, THE RICH BROTH—INFUSED WITH VEGETABLES, TOFU, AND WAGYU—IS ELEVATED WITH HANDMADE UDON NOODLES.

**NORMAL (100 G) : 80 + EXTRA (50 G) : 30**



### HAMACHI

A NOBLE FISH IN JAPAN, PRIZED FOR ITS DELICATE, BUTTERY TEXTURE AND RICH UMAMI FLAVOR. ITS BALANCED TASTE AND SILKY MOUTHFEEL MAKE IT A STAPLE OF REFINED JAPANESE CUISINE. SERVED WITH THE INGREDIENTS LISTED IN THE VEGETARIAN MENU. TO FINISH, THE RICH BROTH—INFUSED WITH VEGETABLES, TOFU, AND HAMACHI—IS ELEVATED WITH HANDMADE UDON NOODLES.

**NORMAL (150 G) : 65 + EXTRA (50 G) : 20**



### VEGETARIAN

A BALANCED AND COMFORTING CULINARY EXPERIENCE, SHOWCASING CAREFULLY SELECTED INGREDIENTS FOR THEIR FRESHNESS AND NATURAL DEPTH OF FLAVOR: ORGANIC SEASONAL VEGETABLES, HOUSE-MADE ORGANIC TOFU, AND A REFINED DASHI BROTH MADE WITH PREMIUM KOMBU AND SHIITAKE MUSHROOMS, SERVED WITH HANDMADE UDON NOODLES.

**40**

*A moment of sharing where tradition and excellence meet.*

## M E D S P A

SERENITY & INNOVATION

*A perfect alliance between ancestral traditions and modern technologies for a unique relaxing experience.*



### IYASHI DÔME

A TREATMENT INSPIRED BY JAPANESE TRADITIONS, COMBINING FAR INFRARED AND DEEP DETOXIFICATION. THIS REGENERATING RITUAL HELPS ELIMINATE TOXINS, IMPROVE SKIN QUALITY AND SOOTHE THE ENTIRE BODY.  
AN ULTIMATE WELLNESS EXPERIENCE TO HARMONIZE BODY AND MIND.

1 SESSION | 50

DISCOVERY PACKAGE (THE FIRST TWO SESSIONS) | 69

AWAKENING TREATMENT (5 SESSIONS) | 220

DETOX TREATMENT (10 SESSIONS) | 375

Lucibel·le  
PARIS  
THE POWER OF LIGHT

IMMERSE YOURSELF IN TECHNOLOGICAL INNOVATION FOR YOUR SKIN. THIS CUTTING-EDGE LED MASK USES DIFFERENT WAVELENGTHS TO REVITALIZE, SOOTHE, AND FIRM. A PERSONALIZED TREATMENT THAT REVEALS RADIANT, REJUVENATED SKIN, PERFECTLY COMPLEMENTING YOUR WELLNESS ROUTINE.

1 SESSION | 40

DISCOVERY PACKAGE (THE FIRST TWO SESSIONS) | 55

OVE PRO PACKAGE (4 SESSIONS) | 150

PREMIUM OVE PRO PACKAGE (8 SESSIONS) | 290

# A JAPANESE-STYLE CORNER SHOP

OUR CONCEPT IS COMPLETED WITH A REFINED JAPANESE CORNER SHOP THAT CELEBRATES **CRAFTSMANSHIP** AND AUTHENTICITY. THIS BOUTIQUE AREA OFFERS A CURATED SELECTION OF HIGH-QUALITY AND **ARTISANAL** PRODUCTS — EVERYTHING THAT GUESTS SEE AND EXPERIENCE AT THÉRÂPIE, FROM THE DÉCOR TO THE TABLEWARE AND EVEN ELEMENTS OF OUR MENU, CAN BE PURCHASED AND BROUGHT HOME.

FROM HANDMADE CERAMICS, FINE TEAS, AND SAKE-WINE TO INCENSE, LACQUERWARE, AND SEASONAL DELICACIES, EACH ITEM IS CAREFULLY CHOSEN TO REFLECT THE PHILOSOPHY OF THÉRÂPIE: **AUTHENTICITY**, ARTISTRY, AND HARMONY. SOON, THESE **TREASURES** WILL ALSO BE AVAILABLE ONLINE, ALLOWING OUR GUESTS TO EXTEND THE THÉRÂPIE EXPERIENCE BEYOND OUR WALLS.

TO SHARE THE SPIRIT OF THÉRÂPIE, WE ALSO OFFER **GIFT CARDS**, A THOUGHTFUL WAY TO INVITE LOVED ONES TO DISCOVER OUR UNIQUE BLEND OF JAPANESE **CULTURE**, **GASTRONOMY**, AND **WELLNESS**.

## À LA CARTE

12:00-15:00 & 19:00-21:30

### SAVORY WAGASHI - BOUCHÉES

酒粕せんべい SAKEKASU SENBEI (RED SHISO-WASABI) | 7,5

松風 MATSUKAZE | 7

東風 KOCHI | 8

### NORI CHIPS-SESAME | 6

### EDAMAME | 5

### 本日一品 RECOMMENDATION DU SHOJIN RYORI | 8

### JAPANESE TAPENADE | 22

### 和牛のたたき WAGYU TATAKI | 30

THINLY SLICED WAGYU BEEF, SEARED RARE, WITH A TENDER RAW CENTER.

### 薄造り 柚子ポン酢 USUZUKURI - HAMACHI | 25

THINLY SLICED YELLOWTAIL CARPACCIO, ENHANCED WITH A FRAGRANT AND REFRESHING YUZU PONZU SAUCE. (SEE "SHABU-SHABU" MENU DESCRIPTION)

### ハマチの活け締め刺身 SASHIMI - HAMACHI PREMIUM- WAKAYAMA | 35

### キャビア CAVIAR NOVA | 73 (20 GR) | 108 (30 GR)

STURGEON PEARLS (ACIPENSER BAERII), RAISED FOR OVER EIGHT YEARS IN ESTONIA'S COLD UNDERGROUND WATERS—AMONG THE **PUREST** IN EUROPE—CRAFTED ACCORDING TO JAPANESE EXPERTISE AND MATURED IN THE TRADITIONAL **MALOSSOL** STYLE. BORN FROM A CLOSE COLLABORATION BETWEEN ESTONIAN FARMERS AND A **JAPANESE MASTER CAVIAR** PROCESSOR, IN THE SPIRIT OF **KAIZEN**, IT REVEALS A SILKY TEXTURE AND A REMARKABLY PURE MINERAL FINISH

## WAGYU GYŪDON < 45 >

*A refined tribute to Japanese culinary tradition.*

THIN SLICES OF SELECT **A5 WAGYU** BEEF, SLOWLY SIMMERED WITH ONIONS IN A DELICATE, HANDCRAFTED BROTH. SERVED OVER A BED OF PEARLY **KOSHIHIKARI** JAPANESE RICE, IT OFFERS A SUBTLE BALANCE OF SWEETNESS, UMAMI, AND AROMATIC ROUNDNESS.

# WAGASHI WORKSHOP

« *Japanese Confectionery as Art* »

DIVE INTO A WORLD OF SWEET POETRY WHERE EACH WAGASHI IS A SMALL EPHEMERAL SCULPTURE, A REFLECTION OF THE SEASONS AND THE JAPANESE SOUL.

## LIMITED PLACES – RESERVATION ONLY

IMMERSE YOURSELF IN THE POETIC WORLD OF WAGASHI THROUGH A PRESENTATION OF THEIR HISTORY, THEIR SEASONAL SYMBOLISM AND THE AESTHETIC PHILOSOPHIES THAT SHAPE THESE REFINED CONFECTIONS.

### ON THE PROGRAM:

#### DEMONSTRATION & GUIDED CREATION

UNDER THE GUIDANCE OF OUR WAGASHI CHEF, MASTER STEP BY STEP THE MAKING OF 3 WAGASHI SPECIALTIES (NERIKIRI, DAIFUKU, DOMYOJI, ETC.), MADE FROM NATURAL AND TRADITIONAL INGREDIENTS (BEAN PASTE, GLUTINOUS RICE FLOUR, ETC.).

#### TASTING & TEA PAIRING

LEARN THE SECRETS OF INFUSION AND THE ART OF PAIRING, TO ENHANCE EVERY BITE AND EVERY SIP.

#### EXCHANGE & QUESTIONS

FINISH WITH A FRIENDLY MOMENT OF DISCUSSION: ASK ANY QUESTIONS YOU MAY HAVE ABOUT INGREDIENTS, WORKING METHODS OR JAPANESE TRADITIONS RELATED TO TEA AND CONFECTIONERY.

### WHAT'S INCLUDED:

- INGREDIENTS
- ALL NECESSARY EQUIPMENT
- ELEGANT BOXES TO TAKE YOUR WAGASHI CREATION WITH YOU
- SELECTION OF PREMIUM JAPANESE TEAS

**THURSDAY AND SUNDAY AT 4:00 P.M.**

*PREMIUM WORKSHOP (€80/PERSON): THREE WAGASHI, ADVANCED MODELING TECHNIQUES AND A FINE SELECTION OF KYUSHU TEAS.*

# EXCLUSIVE OMAKASE < 90 >

THURSDAYS & FRIDAYS - 7:30 PM

TAKE A SEAT AT THE COUNTER FOR AN INTIMATE CULINARY DIALOGUE WITH OUR CHEF MAUD RAVIX, WHERE EVERY BITE IS A SURPRISE AND EVERY DISH TELLS A STORY.

OMAKASE (お任せ), LITERALLY "I ENTRUST MYSELF TO YOU," IS A JAPANESE TRADITION WHERE THE CHEF CRAFTS A UNIQUE MENU, GUIDED BY SEASONAL INGREDIENTS AND THEIR CREATIVE INSPIRATION. LET YOURSELF BE CARRIED AWAY BY HER EXPERTISE AND CREATIVITY IN A WARM AND REFINED ATMOSPHERE.

- A CUSTOM-DESIGNED TASTING MENU, WHERE FLAVORS UNFOLD IN PERFECT HARMONY.
  - EXCEPTIONAL INGREDIENTS, CAREFULLY SELECTED: FRESH FISH, SEASONAL VEGETABLES, AND BOLD TOUCHES.
  - A PRIVILEGED EXCHANGE WITH MAUD, WHO WILL EXPLAIN EACH CREATION.
- TASTING: 5 COURSES, SERVED AT THE CHEF'S PACE.

PAIRINGS: OPTIONAL ARTISANAL SAKES OR NATURAL WINES TO ELEVATE THE FLAVORS (UPON REQUEST).

DURATION: APPROXIMATELY 2H30, IN A COZY AND MINIMALIST SETTING.

### RESERVATIONS

- TIMING: FROM 7:30 PM (LAST ARRIVAL).
- PRICE: €90 PER PERSON (DRINKS NOT INCLUDED) – **€60 (VEGAN MENU)**.
- LIMITED SEATING: MAXIMUM 4 GUESTS PER EVENING

**RESERVATION REQUIRED.**



# IPPUKU TEA RITUAL < 45 >

3:00-6:30 PM (LO: 6:00 PM)

*A DELICATE AND REFINED INTERLUDE INSPIRED BY THE ART OF JAPANESE TEA, TO BE ENJOYED WITH FRIENDS OR SOLO IN A TIMELESS ATMOSPHERE.*

## “CHAGO”

- 1 EXCEPTIONAL TEA FROM OUR SELECTION ≤ €12
- 3 KAISEKI BITES (3 SAVORY WAGASHI)
- 2 WAGASHI (1 NERIKIRI + 1 DAIFUKU)

## “SHUGO”

### FOR SAKE, WINE, AND BEER LOVERS

- 1 GLASS OF RED WINE / WHITE WINE / CRÉMANT / SAKE / BEER
- 3 KAISEKI BITES (3 SAVORY WAGASHI)
- 2 WAGASHI (1 NERIKIRI + 1 DAIFUKU)

# WAGASHI

A TRADITIONAL JAPANESE CONFECTION DELICATELY CRAFTED FROM NATURAL INGREDIENTS. THESE SWEETS, OFTEN INSPIRED BY THE SEASONS, COMBINE REFINED AESTHETICS WITH SUBTLE FLAVORS, REFLECTING THE ELEGANCE AND CULTURE OF JAPANESE TEA CEREMONIES.

## 子供の日 端午の節句

IN MAY, JAPAN CELEBRATES CHILDREN'S DAY (TANGO NO SEKKU), A PERIOD DEDICATED TO THE GROWTH AND HAPPINESS OF CHILDREN. DURING THIS SEASON, A TRADITIONAL CONFECTION CALLED KASHIWA MOCHI IS ENJOYED. THIS LEAF IS CONSIDERED A SYMBOL OF PROSPERITY AND THE CONTINUITY OF GENERATIONS, AS THE OLD LEAVES DO NOT FALL UNTIL NEW ONES HAVE APPEARED.

## KASHIWAMOCHI 柏餅 | 8

### RICE CAKE, RED BEAN PASTE OR MISO BEAN PASTE

KASHIWAMOCHI IS A JAPANESE CONFECTION ENJOYED IN MAY FOR CHILDREN'S DAY. WRAPPED IN AN OAK LEAF, IT SYMBOLISES THE CONTINUITY OF THE FAMILY.

## FUJI-DANA 藤棚 | 8.5

### KINTON, CHOCOLATE

AU JAPON, LES GLYCINES SONT SOUVENT ADMIRÉES SOUS FORME DE TREILLES, D'OÙ TOMBENT EN CASCADE DE LONGUES GRAPPES DE FLEURS. UN CHOCOLAT ONCTUEUX EST ENVELOPPÉ DANS UNE PÂTE DE HARICOTS BLANCS.

## BOTAN 牡丹 | 8

### NERIKIRI, RED BEAN PASTE

AU JAPON, LA PIVOINE EST APPELÉE « LE ROI DES FLEURS » ET EST APPRÉCIÉE POUR SA BEAUTÉ MAJESTUEUSE. CETTE CRÉATION EST RÉALISÉE AVEC UN NERIKIRI TRADITIONNEL.

## PISTACHIO DAIFUKU ピ스타チオ大福 | 8.5

### MOCHI, PISTACHIO AN

UNE PÂTE DE MOCHI TENDRE RENFERMANT UNE RICHE PÂTE DE PISTACHE MÊLÉE À UNE PÂTE DE HARICOTS BLANCS.

## SAKURA DOMYOJI 桜道明寺 | 8

CRAFTED FROM DOMYOJI FLOUR (STEAMED GLUTINOUS RICE, DRIED AND COARSELY GROUND), THIS SOFT AND DELICATE PINK RICE CAKE IS FILLED WITH A SWEET AND SUBTLE RED BEAN PASTE. WRAPPED IN A FRAGRANT CHERRY BLOSSOM LEAF, IT STANDS AMONG THE MOST ICONIC TRADITIONAL CONFECTIONS IN JAPAN

*Seasonal wagashi collection by Mariko-san*

長岡 真理子

# MORNING MATCHA WORKSHOP

*"A Japanese ritual to awaken the senses at  
The KaPie-Ochaya"*

EVERY WEEKEND, THÉRÂPIE INVITES YOU TO SLOW DOWN TIME DURING A REFINED INTERLUDE AROUND MATCHA.

## LIMITED PLACES - RESERVATION ONLY

AN EXCEPTIONAL MORNING: HARMONY, PRESENCE, ELEGANCE — FROM THE MORNING.

TREAT YOURSELF TO A MOMENT OF RELAXATION TO START THE DAY OFF RIGHT: A GUIDED MATCHA TEA CEREMONY, ACCOMPANIED BY JAPANESE SWEETS AND AN AWAKENING TO FULL PRESENCE.

## CONTENT OF THE EXPERIENCE

- INTRODUCTION TO MATCHA : GESTURES, UTENSILS, SYMBOLISM
- PERSONALIZED PREPARATION OF YOUR MATCHA (USUCHA)
- TASTING OF 2 GREAT VINTAGES OF MATCHA (KYUSHU)
- PAIRING WITH SEASONAL WAGASHI
- A LITTLE TIME FOR INTROSPECTION OR GUIDED BREATHING
- FREE DISCUSSION ON TEA, JAPANESE CULTURE AND THE ART OF SLOWING DOWN

**SATURDAY AND SUNDAY: 10:30 A.M. - 12:00 P.M.**

*GIVE OR TREAT YOURSELF TO A GENTLE AWAKENING. AN IDEAL MOMENT TO EXPERIENCE ALONE, AS A COUPLE OR AS A GIFT VOUCHER.*

*PREMIUM WORKSHOP (€80/PERSON)*

# WINE

## DOMAINE KUHEIJI

DOMAINE KUHEIJI REMAINS ONE OF THE MOST CAPTIVATING TREASURES OF THE CÔTE DE NUITS. A GATEWAY BETWEEN JAPAN AND BURGUNDY, THIS EXCLUSIVE 2.5-HECTARE ESTATE IN MOREY-SAINT-DENIS SERVES AS A BRIDGE BETWEEN TWO CULTURES. MANAGED DAILY BY HIROTAKA ITO, THE PROPERTY EMPLOYS ORGANIC FARMING METHODS TO PRODUCE AN EXCEPTIONAL ARRAY OF WINES FROM THE FINEST VINTAGES, ADHERING TO THE PURE BURGUNDIAN TRADITION WHILE BENEFITING FROM JAPANESE PRECISION.

### CRÉMANT DE BOURGOGNE BLANC DE NOIRS

IT IS DISTINGUISHED BY ITS FINE, DELICATE BUBBLES AND ITS PALE, PEARLESCENT HUE, CHARACTERISTIC OF A BLANC DE NOIRS. ITS EXPRESSIVE BOUQUET MELTS RED BERRIES, CITRUS FRUITS, AND WHITE FLOWERS. ON THE PALATE, IT UNVEILS A ROBUST, WINE-LIKE STRUCTURE, HARMONIOUSLY BALANCED BY FRESH FRUIT NOTES AND A BROAD, ELEGANT FINISH.

9 42

### ALIGOTÉ 2022

A REFINED WHITE WINE, YOUTHFUL, STYLISH, AND SOMEWHAT UNCONVENTIONAL. IT IS DRESSED IN PALE GOLD. WITH A UNIQUE FLAVOR PROFILE, THE BOUQUET OF THE BOURGOGNE ALIGOTÉ APPELLATION REVEALS FRUITY NOTES (APPLE, LEMON) AND FLORAL NUANCES. ON THE PALATE, THIS LIVELY WINE ENLIVENS THE TASTE BUDS.

12 58

### COTEAUX BOURGUIGNONS 2022

THIS WINE PRESENTS A REFINED AND AROMATIC PROFILE, DISTINGUISHED BY FRUITY UNDERTONES AND A BALANCED STRUCTURE. GRAPE VARIETIES: PINOT NOIR, GAMAY

11 55

### BOURGOGNE CHARDONNAY 2022

IT WILL FEATURE HAZELNUT WITH HONEYED, BUTTERY UNDERTONES, COMPLEMENTED BY NUANCES OF FERN, SPICES, AND CANDIED CHESTNUT. ON THE PALATE, IT PRESENTS AS AN AROMATIC WINE—ELEGANT WITHOUT BEING INSUBSTANTIAL, GENEROUS WITHOUT BEING WEIGHTY, SMOOTH YET ROBUST, DRY AND SOOTHING, ENVELOPING AND NOTABLY PROFOUND, LACKING IN STRICT STRUCTURE BUT EXHIBITING PERSISTENCE.

81

### ALOXE CORTON 2022

IN ADDITION TO THE CHARACTERISTIC FLORAL AND FRUITY NOTES OF THE GRAPE VARIETY, THERE ARE NUANCES OF WHITE PEPPER, SWEET SPICES, AND TOAST. THE TEXTURE IS AMPLE, AND THE TANNINS, ALTHOUGH NOTICEABLE, TEND TO MELLOW.

121

### BOURGOGNE PINOT NOIR 2022

ON THE NOSE, THE CHARACTERISTIC BOUQUET OF THE BURGUNDY APPELLATION REVEALS A MEDLEY OF SMALL RED AND BLACK FRUITS, SUCH AS STRAWBERRY, CHERRY, BLACKCURRANT, AND BLUEBERRY. THE RED BURGUNDY IS LIVELY ON THE PALATE, SHOWCASING A WELL-STRUCTURED PROFILE WITH A SMOOTH AND ROUNDED FINISH.

92

### GEVREY-CHAMBERTIN 2022

THE BRILLIANCE OF YOUTH ENDOWS THEM WITH A VIBRANT RUBY HUE, WHICH TRANSITIONS INTO A RICH CARMINE, BLACK CHERRY SHADE AS THEY MATURE. STRAWBERRY, BLACKBERRY, VIOLET, MIGNONETTE, AND ROSE.

152

### NUITS SAINT-GEORGES 2022

BENEATH A TWILIGHT HUE OF PURPLE, RICH AND OCCASIONALLY VEERING TOWARDS MAUVE, THE RED OFTEN EVOKES IMAGES OF ROSE AND LICORICE. AROMAS ASSOCIATED WITH YOUTH ENCOMPASS CHERRY, STRAWBERRY, AND BLACKCURRANT, WHEREAS THOSE INDICATIVE OF MATURITY REVEAL LEATHER, TRUFFLE, FUR, AND GAME.

138

# TEA TIME

OUR ENSO BRAND PRESENTS A METICULOUSLY CURATED SELECTION OF JAPAN'S FINEST AND MOST ESTEEMED TEAS. SOURCED FROM SMALL, ARTISANAL TEA FARMS. OUR COLLECTION INCLUDES OVER 35 JAPANESE TEAS. WHICH CAN BE ENJOYED ON-SITE (ALL TEAS ARE BREWED WITH MICRO-FILTERED, REVERSE-OSMOSIS WATER) OR PURCHASED IN OUR BOUTIQUE.

WITH THE ARRIVAL OF THE BRIGHT DAYS. LET YOURSELF BE SURPRISED BY THE ELEGANCE OF **KŌRIDASHI - THE JAPANESE METHOD OF INFUSING ICED TEA.**

### MIYA – GYOKURO PREMIUM | 14 | 38,50(50G)

PRESTIGIOUS SHADE GREEN TEA, HARVESTED BY HAND. ITS DARK AND SHINY LEAVES ARE FULL OF AMINO ACIDS. OF RARE INTENSITY, OFFERING A DEEP UMAMI SWEETNESS WITH MARINE AND BUTTERY NOTES. A UNIQUE SENSORY EXPERIENCE. VERY RICH IN THEANINE, RECOGNIZED FOR ITS RELAXING AND REVITALIZING EFFECTS. A TEA OF MEDITATION AND MINDFULNESS.

### SAYAKA – THÉ BLANC PREMIUM | 14 | 40(50 G)

A RARE WHITE TEA FROM YAME, HAND-SELECTED BY TEA MASTER KIYA. SMOOTH, SWEET, AND UMAMI-RICH WITH NO BITTERNESS OR ASTRINGENCY; A ROUNDED, LINGERING FINISH. RICH IN AMINO ACIDS (L-THEANINE) FOR CALM FOCUS; ANTIOXIDANTS PROMOTE RELAXATION AND OVERALL WELLNESS.

### KOTARO – TAMARYOKUCHA HIGH-GRADE | 7 | 24(50G)

GREEN TEA CALLED "TAMA" (JADE COLOR), CLOSE TO SENCHA BUT WHOSE LEAVES ARE ROLLED IN LOOPS AND NOT IN NEEDLES. MARKED SWEETNESS, RICH IN UMAMI. FLORAL AND FRUITY AROMATIC NOTES, NATURALLY FRAGRANT. MODERATED IN THEINE, THIS TEA IS IDEAL IN THE AFTERNOON. PROMOTES RELAXATION AND DIGESTION.

### MIZUHO - PREMIUM SENCHA & MATCHA BLEND (YAME) | 9 | 26,50(100G)

BLEND OF SENCHA AND ORGANIC MATCHA (CULTIVAR YABUKITA), ASSEMBLED BY KOGA-SAN. BRIGHT, BRIGHT AND NOT BITTER FLAVORS, PERFECT IN SUMMER. BENEFITS: REFRESHING AND HEALTHY DRINK, MOISTURIZING, RICH IN ANTIOXIDANTS, IDEAL HOT OR COLD BREW FOR TOTAL WELL-BEING.

### YUKI PREMIUM KOCHA (SAGA) | 8 | 33,50(100G)

THIS ORGANIC BLACK KOCHA, CAREFULLY ASSEMBLED BY OKAMOTO-SAN, COMBINES THE SWEET NOTES OF LYCHEE WITH A FLORAL VEIL OF ROSE PETALS. LOW IN CAFFEINE, IT SOOTHES AND PERFUMES THE AFTERNOON, DELICIOUS HOT OR ICY

*Patience, purity, infinite freshness: each tea reveals its nuances with delicacy and harmony.*

3 INFUSIONS INCL., EXCEPT MATCHA

# DRINKS

KIMINO (NEW – EXCLUSIVE) | 7,9 (25 CL) | 25 (6 BTLs)  
SPARKLING JUICE: MOMO (PEACH) – YUZU – UME (PLUM)

ICED COCO MATCHA LATTE – ORGANIC | 12.50  
MATCHA LATTE (COW MILK) – ORGANIC | 9  
MATCHA LATTE + COLLAGEN (BOVINE) – ORGANIC | 11  
HŌJICHA LATTE (COW MILK) – ORGANIC | 8

## EXTRAS

+0,50 — HOMEMADE ORGANIC ALMOND MILK OR ORGANIC OAT BARISTA MILK  
+0,20 — ORGANIC AGAVE SYRUP  
+1,00 — ORGANIC HONEY

HOMEMADE ORGANIC ALMOND MILK | 5  
HOMEMADE ORGANIC VANILLA HONEY MILK | 6  
COFFEE SUMIYAKI BLEND | 8 | 42 (250 G)  
CAPPUCCINO SUMIYAKI BLEND | 8,50

## WATER

*MICRO-FILTERED AND OSMOTIZED*

STILL | 4 (37,5 CL) | 5 (50 CL) | 7 (75 CL)  
SPARKLING | 4,50 (37,5 CL) | 5,50 (50 CL) | 7,50 (75 CL)

MUGICHA PREMIUM | 7 (37,5 CL) | 10 (50 CL) | 12 (75 CL)  
*SLOWLY COLD-BREWED OVER SEVERAL HOURS, IT REVEALS THE NATURAL SWEETNESS OF GOLDEN BARLEY AND OFFERS A REFRESHING, CAFFEINE-FREE SENSATION. A TASTE OF JAPANESE SUMMER, FULL OF SMOOTHNESS AND LIGHTNESS.*

SPARKLING KOUCHA TEA | 8.5  
SPARKLING SENCHA TEA. | 8.5

BEER “ECHIGO PREMIUM” (KOSHIHIKARI RICE) 50CL | 12  
CIDER “LUMIERE” - 33CL. | 16 **NEW**  
SAKE GOLD MASUMI - 18 CL | 18  
SAKE ENANOHOMARE HIYA GENSHU - 18 CL. | 22

WHISKY JUNENMYO RED LABEL 46% - 5CL | 12  
WHISKY JUNENMYO ROUGE BLENDED 46%- 5CL | 14  
WHISKY JUNENMYO HALF DECADE 40%.- 5CL | 15  
WHISKY JUNENMYO SEVEN 7 YEARS, 46%- 5CL | 18

# SAKE

**KUHEIJI 50 JUNMAI DAIGINJO "EAU DU DESIR"** IS A CONTEMPORARY AND GASTRONOMIC SAKE THAT SHOWCASES THE STRENGTH AND RICHNESS OF ITS TERROIR, WITH THE YAMADA-NISHIKI RICE VARIETY FULLY ARTICULATING ITS CHARACTER. IT PRESENTS AROMAS OF WHITE FLOWERS, INCLUDING JASMINE, EVOKING A SENSE OF VITALITY AND FRESHNESS. **13 74**  
720ml

**KUHEIJI 50 JUNMAI DAIGINJO « SAUVAGE**" IS A SIGNATURE VINTAGE THAT HIGHLIGHTS THE USE OF OMACHI RICE, THE OLDEST SAKE RICE. ITS AROMA IS SUBTLE, REVEALING VEGETAL NUANCES REMINISCENT OF GREEN GRASS AND CEREALS, ALONG WITH A DELICATE BOTANICAL FRAGRANCE THAT, WHILE UNDERSTATED, PRESENTS A DIVERSE ARRAY OF EXPRESSIONS. **13 74**  
720ml

**KUHEIJI 40 JUNMAI DAIGINJO “KYODEN”.** ON THE PALATE, A DELICATE BITTERNESS EMERGES, REMINISCENT OF FRESHLY PRESSED CITRUS PEEL, ALONGSIDE A REFINED UMAMI CHARACTER. THE BREADTH OF THE UMAMI IS GENTLY RESTRAINED, CREATING A BEAUTIFULLY HARMONIOUS BALANCE. A SUBTLE ACIDITY EXTENDS THE SENSATION OF FRESHNESS THROUGH THE FINISH. **17 99**  
720ml

**KUHEIJI 35 JUNMAI DAIGINJO « EXTRAORDINAIRE" UMAMI AND ACIDITY** NOTES OF TOASTED CEREALS FROM THE UNDERBRUSH AND MUSHROOMS GRADUALLY YIELD TO A REMARKABLE FRESHNESS. WHILE TRANSLUCENT, IT POSSESSES A RICH AND CREAMY TEXTURE. A SAKE OF EXCEPTIONAL ELEGANCE. **17 99**  
720ml

**KUHEIJI 30 KAMOSHIBITO DAIGINJO "HI NO KISHI" 2020** KUHEIJI'S MASTERPIECE. PRODUCTION LIMITED TO ONLY 270 PIECES. AROMAS OF MELON, HERBS AND A LIGHT SMOKE. FRESH WITH A SOFT ACIDITY THAT SPREADS ON THE MOUTH EFFORTLESSLY. NOTES OF UMAMI AND PLEASANT BITTERNESS WRAPPED IN A SMOOTH TEXTURE **292**  
720ml

**SPARKLING JUNMAISHU SAKE KOKKA NO KAORI, 10%** THIS SPARKLING SAKE CAPTIVATES WITH ITS DELICATE PINK HUE, NATURALLY DERIVED FROM RED YEAST, AND ITS FINE, NATURAL BUBBLES. ELEGANT AND REFINED, IT REVEALS A FRUITY, FLORAL AND GENTLY TANGY PROFILE REMINISCENT OF ACEROLA CHERRY, WITH LAYERED COMPLEXITY AND NOTES OF CITRUS, CHERRY, RASPBERRY AND WILD BERRIES. **90**  
720ml

**ENOKI KIYOMORI HEIAN** IS A NIGORI SAKE DISTINGUISHED BY ITS LIGHT FILTRATION, RESULTING IN A CLOUDY APPEARANCE AND A VELVETY TEXTURE. ON THE PALATE, IT DELIVERS A SMOOTH YET LIVELY EXPERIENCE, FEATURING MILKY FLAVORS AKIN TO YOGURT AND HINTS OF RIPE PEAR. A DELICATE ACIDITY AND A TOUCH OF BITTERNESS ESTABLISH A HARMONIOUS BALANCE, RENDERING THIS SAKE BOTH OPULENT AND INVIGORATING. **15 61**  
500ml  
TYPE: NIGORI (UNFILTERED) - NAGANO

**YUZUSHU** IS A JAPANESE LIQUEUR CREATED BY INFUSING YUZU JUICE, A CITRUS FRUIT INDIGENOUS TO JAPAN, INTO SHŌCHŪ. IT IS CELEBRATED FOR ITS INVIGORATING AND ZESTY FLAVOR. **14 70**  
720ml

**UMESHU**, CRAFTED FROM PLUMS MACERATED IN SHOCHU (DISTILLED ALCOHOL), IS DISTINGUISHED BY ITS SMOOTH TEXTURE AND FRUITY FLAVOR, OFFERING A REFRESHING EXPERIENCE FOR THE PALATE. **14 70**  
720ml